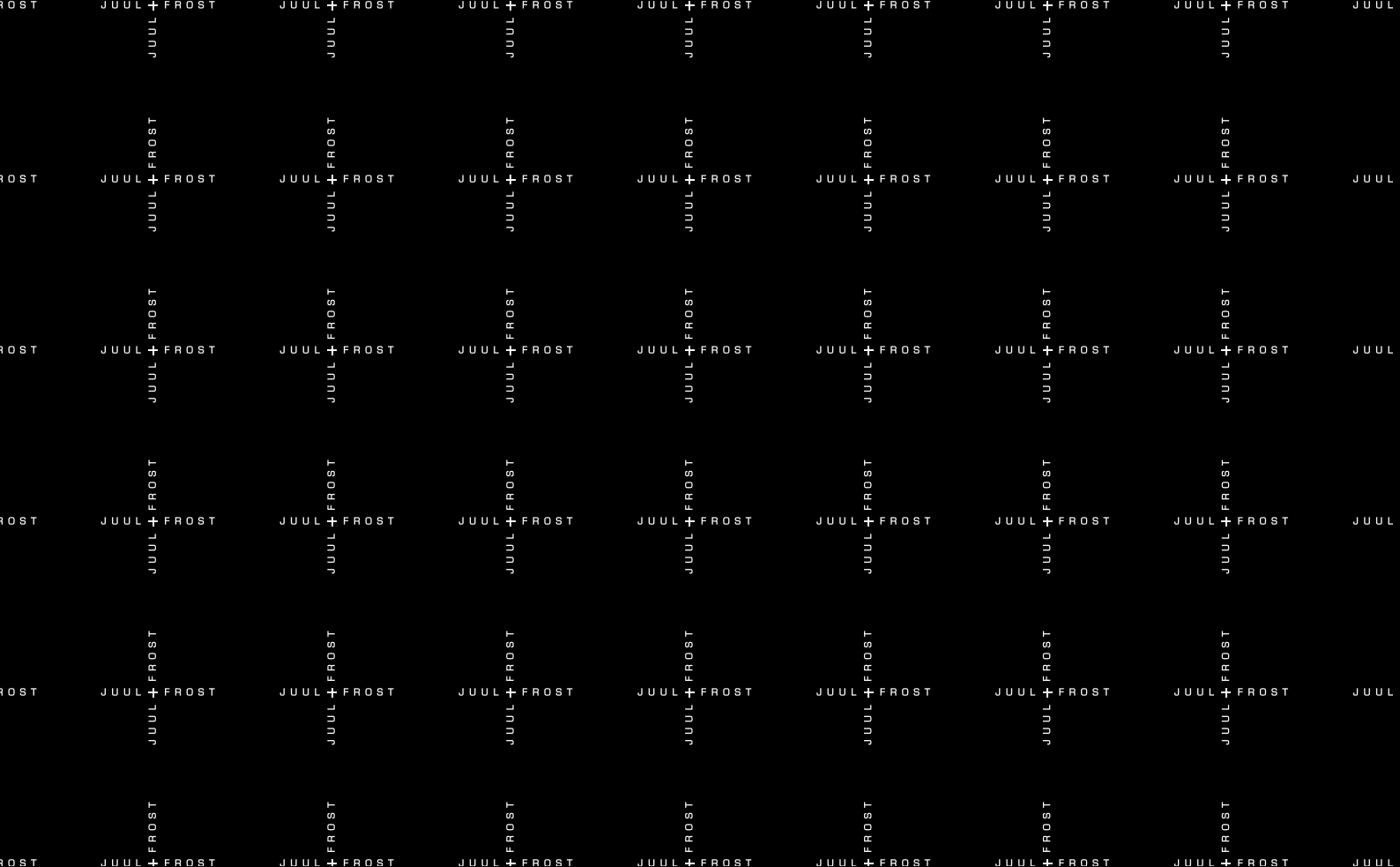
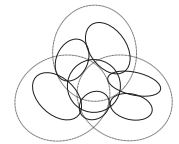


DTU SKY LAB

5





DTU SKYLAB

**INNOVATION IS A CONTACT SPORT -
FROM PHYSICAL DESIGN TO SOCIAL DESIGN**





Synergy, cooperation and visibility have been vital aspects

INNOVATION IS A CONTACT SPORT

JUUL | FROST Architects are behind the realisation of DTU SKYLAB - DTUs platform for development and exchange between research and business. The transformation project was officially inaugurated in September 2014 with great interest from both the business and educational sectors.

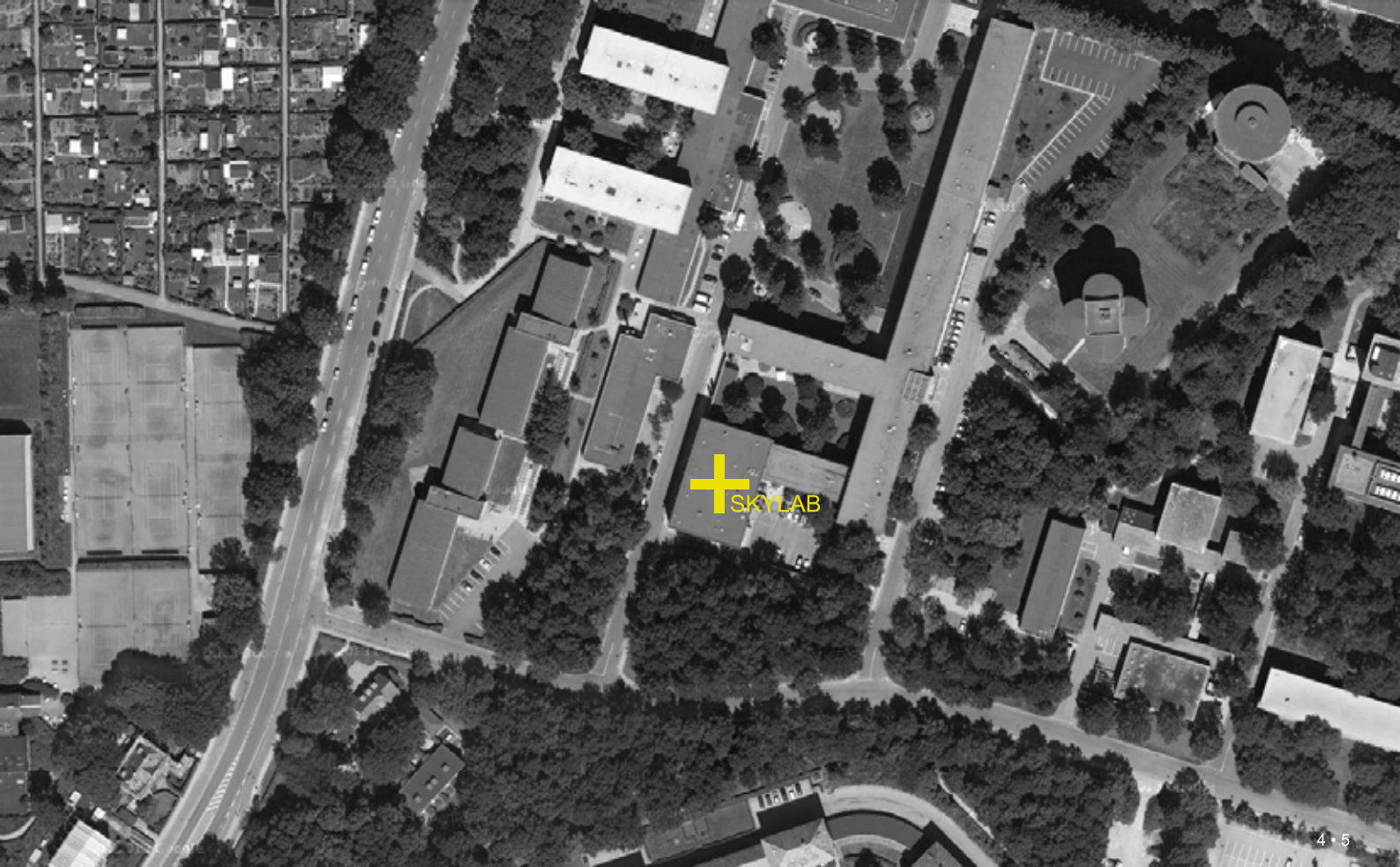
SKYLAB functions as a community for everything relating to innovation within DTU, whilst handling entrepreneurship, conferences and teaching as well as start up events, bootcamps and talent processes. Synergy, cooperation and visibility have been vital aspects for a project focusing on the creation of value for knowledge. As a DTU flagship SKYLAB stands as an invitation to both students, academia and businesses - a concrete example of the crucial cooperation between education and business life.

SKYLAB

STRATEGIC CAMPUS DEVELOPMENT

FROM SUBJECT CULTURE TO INNOVATION CULTURE

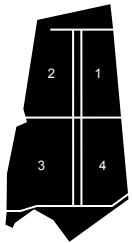
Today the term campus is evolving. Increasing requirements for transparency and exposure of knowledge environments are guiding the physical formation and structuring of the future campus. There is a need for a greater merging of knowledge, learning and life with a greater degree of public accessibility.



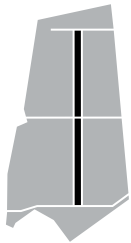
SKYLAB

STRATEGIC CAMPUS DEVELOPMENT

Campus development is both complex and dynamic and should be done with an eye on the future. The massive dependency on a shared set of values between the campus and town, value forming physical organisation as well as awareness of the social and human aspects that form the campuses identity. That identity can never be fixed and is as the city': transformative and rejuvenating - always on its way.



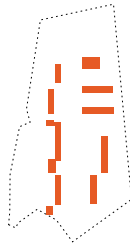
Structural disposition



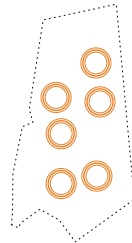
Avenue



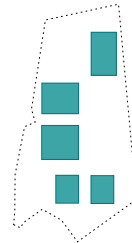
Green structure



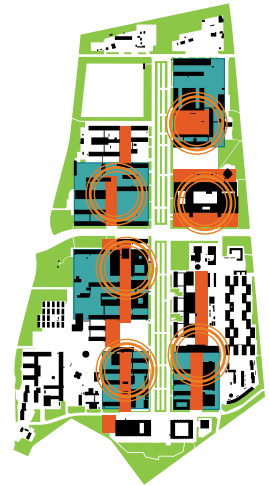
Main paths



Networks



Density zones



Strategic Campus plan

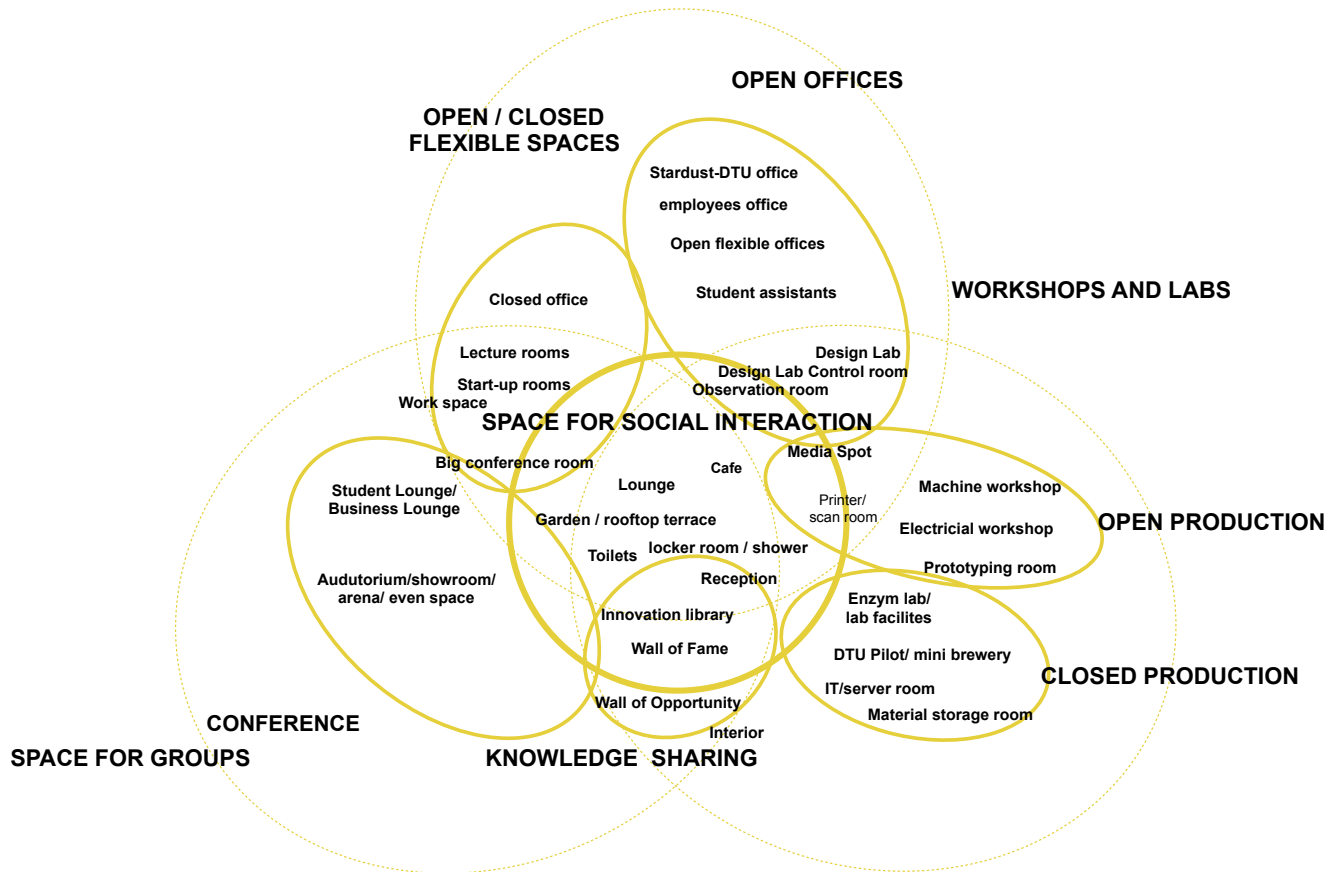
NEW LEARNING ENVIRONMENT

Helle Juul, Architect MAA, MNAL, Ph.D, is responsible for the development of the concept, design and detailing: *The way to a successful campus goes through our tools for the optimising of multifunctional, open and transparent spaces, which support varied teaching, gatherings and working processes. Put briefly it is about an advanced requirements analysis of, what the business, the students and the university really need in order to maintain a fruitful cooperation.*

By supporting multi functional processes, new situations and possibilities of use occur, a greater utilisation and occupancy of which they should support "new ways of learning – new ways of working".



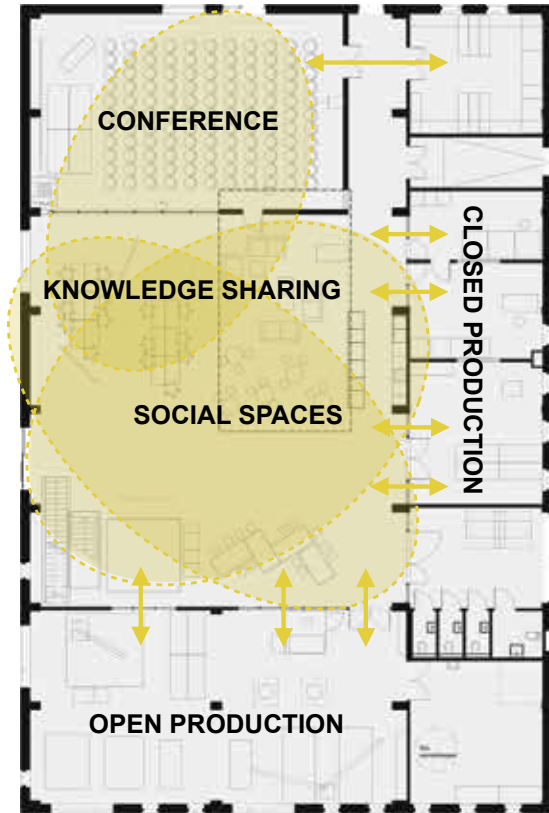
By supporting multi functional processes, new situations and possibilities of use occur



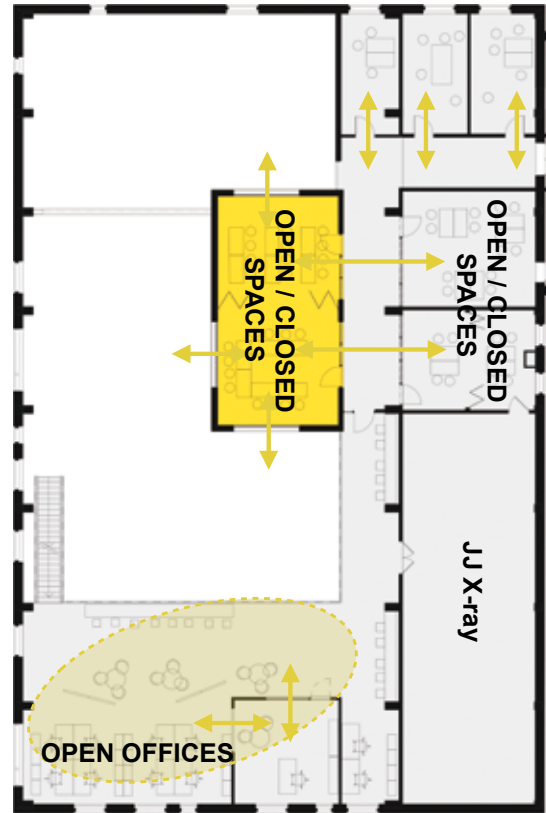
FROM PHYSICAL DESIGN TO SOCIAL DESIGN

SYNERGY, COOPERATION AND VISABILITY

The behaviour that today describes a campus has changed from an introverted discipline related collaboration to an invitations culture, which contributes extensively to the surrounding society' understanding of itself as a knowledge society. Multi-faceted learning environments and new teaching methods should be clearly reflected and form the driving force behind the physical formation and structuring of the new campus. Transparency and visibility in the environments producing knowledge are vital. With its optimal exposure, SKYLAB is placed with views looking in from the main road. From being a completely enclosed hall to a publicly accessible building, SKYLAB has become a new visual gateway to DTUs campus area.



Ground floor



1st floor



BEFORE



AFTER



BEFORE



AFTER

PHYSICAL FRAMEWORK

PLATFORM FOR INNOVATION

SKYLAB responds to an increasing requirement for a strong, inviting and flexible profile in order to position the institution in the international competition to attract and hold on to students, teachers and researchers. The building consists of a prototype workshop, laboratory, office facilities and auditoriums for courses and workshops. The physical framework supports the philosophy behind SKYLAB through its open and flexible structure, which invites research and exchange. There are different types of teaching situations and meeting places, which encompass the different types of users. The building presents itself, with its relaxed and mobile furnishings, as a platform for testing and dialogue, where anything can be examined and tested – visible for all and spanning all professions.



a platform for testing and dialogue - visible for all and spanning all professions





Apollo

DTU SKYLAB

Project: Innovation facilities for students, researchers and companies, DTU Lyngby, Copenhagen

Client: Technical University of Denmark / CAS Campus Service

Lead Consultant: Alectia

Architect: Juul Frost Architects

Lighting concept: Lightscaapes

Area: 1.600 m²

Period: 2013 - 2014

Photo: Stammers Kontor





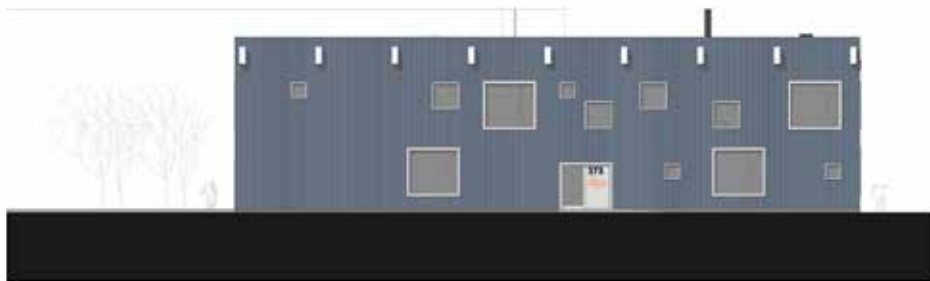
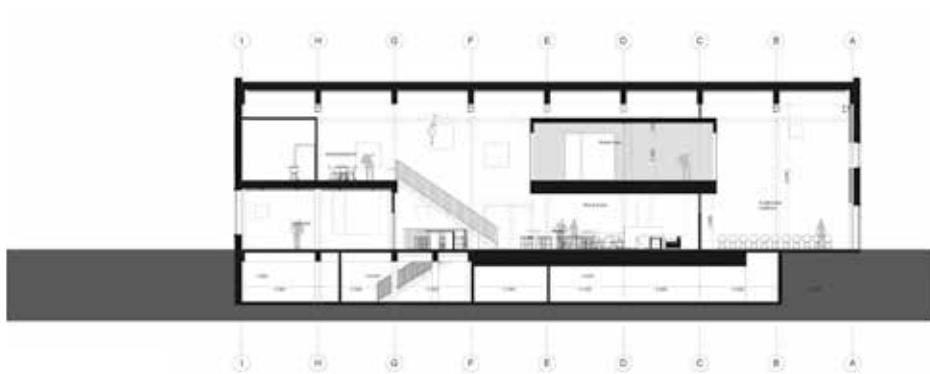
OPEN PRODUCTION



PHYSICAL FRAMEWORK

The building is a laboratory, which opens itself up via the façade with its many windows, through which it invites the surroundings in rather than enclosing itself around its own knowledge production. The view out towards the sky as well as the surrounding gardens forms a comfortable backdrop for both the informal everyday occurrences as well as lectures. The basement of the building constitutes a large open space with the possibility to see across and through the workshops and with its striking skybox as a gathering point. The space can in one motion encompass many people and simultaneously appear intimate. SKYLAB is created on the basis of an existing building, which in itself shows transformation and regeneration in a campus under rapid development.





SPACE FOR FUTURE ENTREPRENEURES

SKYLAB has a high ceiling both in a physical sense and in terms of its ambition. Its students should dare to set the bar just as high and to shift the boundaries of what is possible. Experience creates important learning and value, which can be converted to a final result. Denmark should live off knowledge but how are the vital entrepreneurs of the future to be created? One requirement is a stimulating environment with the attached correct competencies and network. With SKYLAB the students now gain a possibility to free fall with their ideas, which may well create the basis of a future professional breakthrough!

See more on www.skylab.dtu.dk



The building has today become a destination - a strong brand



CURRENT

JUUL | FROST Architects focuses on diverse urban, residential and landscape environments and develops strategic plans for innovation districts and knowledge cities - always with social sustainability as platform.

JUUL | FROST Architects has more than 20 years of experience in transforming urban-, business-, and campus areas. The approach is holistic and takes into measure both commercial, structural, social and urban needs. Our projects are orchestrated with an overall purpose: to have people meet and interact.

JUUL | FROST Architects is based in Copenhagen, works across all of Scandinavia and employs a staff with interdisciplinary profiles and experience.

WWW.JUULFROST.DK



ORGANISATION

JUUL | FROST Architects founded by Flemming Frost, Architect MAA, SAR and Helle Juul, Architect MAA, MNAL, Ph.D and is an internationally orientated practise with expertise within Architecture, urban planning, public spaces and landscape.

The view is always holistic, and based on an academic attitude and method. The practice has 32 interdisciplinary employees and is organised in three units.

CITY + SPACE + LANDSCAPE

The work spans from the overall city level to urban spaces, the urban landscape – and the development of large masterplans, urban planning, urban strategies and urban design. We work in the interchange between movement and spatial scenarios, between different levels of scale, between landscape, urban spaces and building. Always with a holistic set of values.

HOUSING + BUILDINGS Continuously optimizing industrialized building practices in order to develop new types of architecture that comply with the needs of habitants. For the time (2017) we have 3.500 housing units, research housing, study and family housing in process – in Denmark and Sweden.

RESEARCH + DEVELOPMENT

Research and presentation of central questions within society, urbanity and architecture are the main tasks of the unit and are always deeply integrated in the offices other working areas.

ÖREBRO UNIVERSITY

Project: Development of Örebro University: Business School with auditorium for 560 persons
Campus Square, research and student housing, Örebro, Sweden

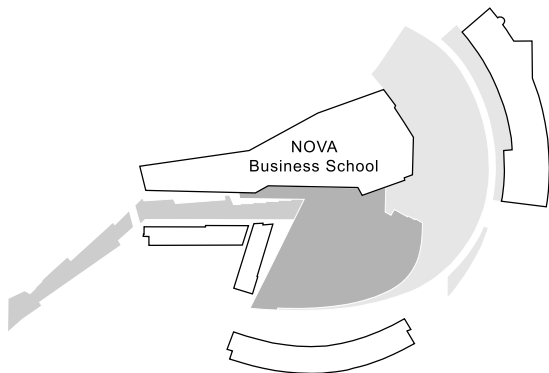
NOVA Business School

Client: Örebroporten AB

Area: 9.500 m²

Period: 2011-2015

Award: Örebro Kommuns Byggnadspris 2015



SELECTED PROJECT - SEE MORE ON WWW.JUULFROST.DK

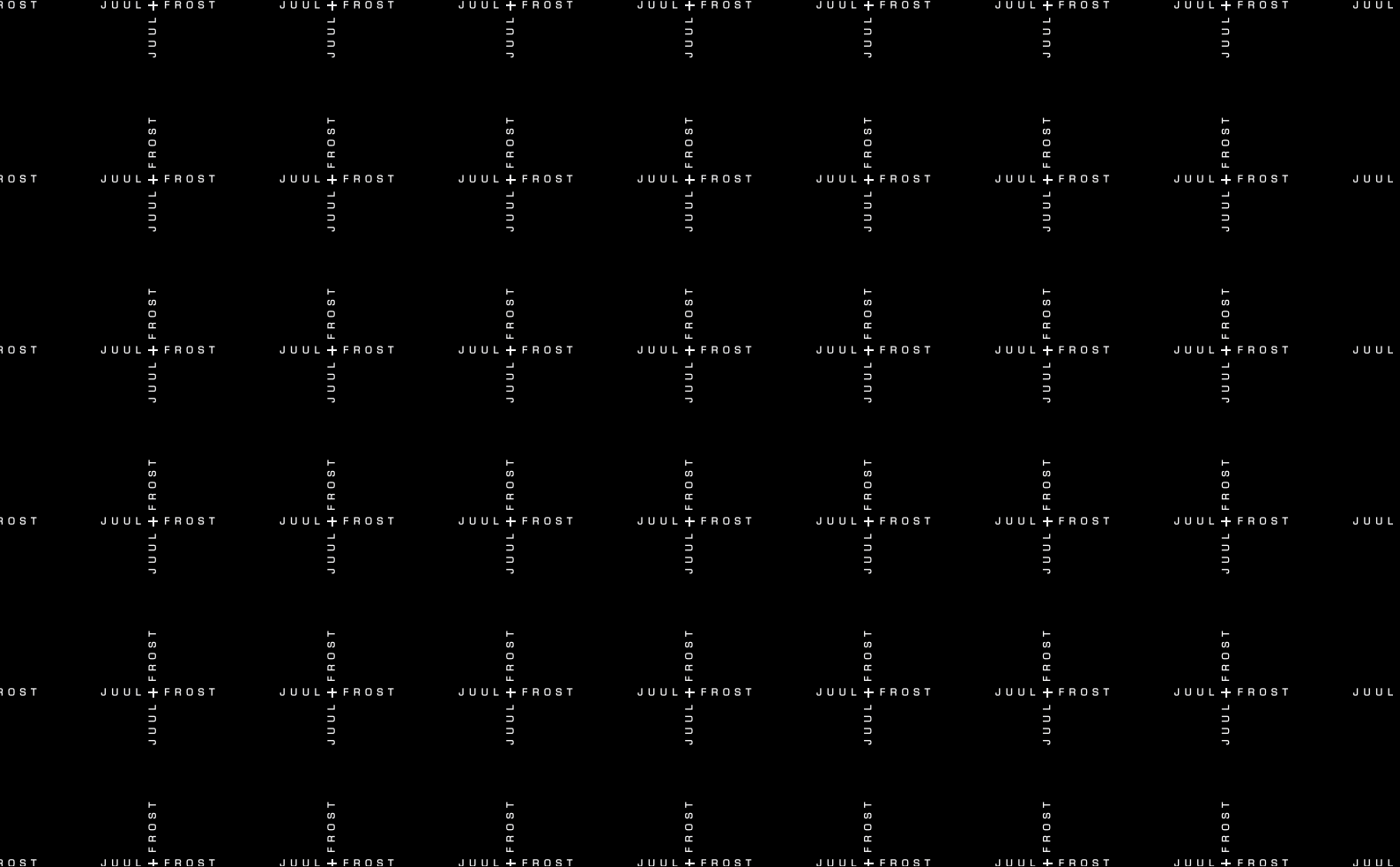






JUUL | FROST

A R K I T E K T E R





JUUL | FROST
ARKITEKTER

Refshalevej 147
DK-1432 København K

T. +45 3295 9578
info@juulfrost.dk

